

Harehope Quarry Special Invertebrate Site

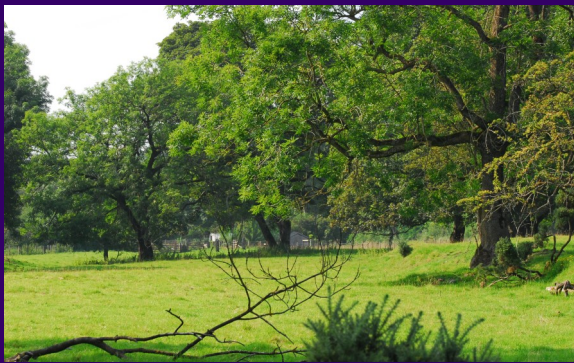
Habitats

Flower-rich grassland and bare banks

Marjoram, wild thyme, viper's-bugloss and knapweed are some of the flowers which support pollinators at this site, while bare sandy banks provide basking and nesting habitat.

Wood pasture

An area of large trees including ash, birch, sycamore and alder with an understory of gorse, thistles and grassland provides sunny, sheltered habitat with good structure for spider webs, deadwood and a variety of food plants. Grazing by Herdwick sheep provides dung for dung beetles.



Woodland and stone structures

Alder carr and broadleaf woodland, including pussy willow, hazel and beech, along with old stone walls and deadwood provide shelter, food and nesting sites.

Running water, river shingle and ponds

Both the Bollihope Burn and river Wear run through the site, with a mix of pools, riffles and river shingle. Species-rich ponds with water plantain and bulrush provide contrasting habitat.

Species

Nationally scarce northern-bear spider (pictured), lives on the river shingle while southern hawkers emerge from the ponds.



Flowers support dark-edged bee-flies, stripe-faced dronefly (pictured), pale-saddled Leucozona and northern wasp hoverflies.



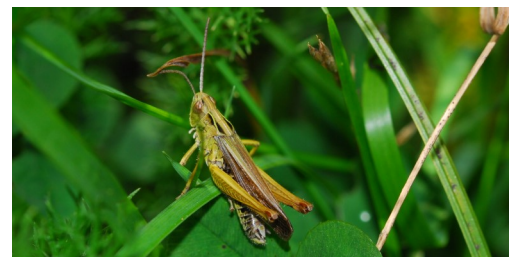
Moths include night-flying chevron (pictured), grey chi, and heath rustic as well as day-flying chimney sweeper moths.



Dingy skippers, field digger wasps (pictured), red mason bees and tawny mining bees use bare areas.



Grassland is used by common field grasshoppers (pictured) and the soldier beetle, *Cantharis livida*.

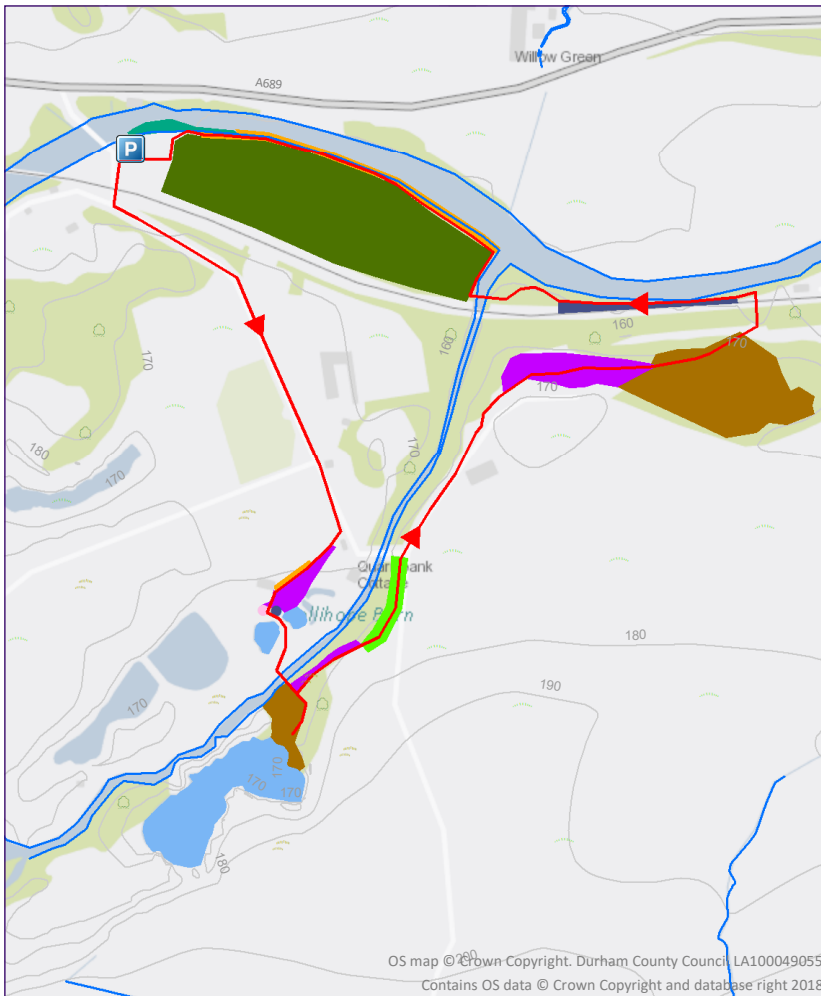


Alder feeds leaf-mining sawfly, *Heterarthrus vagans*, larvae. Decaying wood supports wasp beetles (pictured).



Harehope Quarry invertibrate survey route

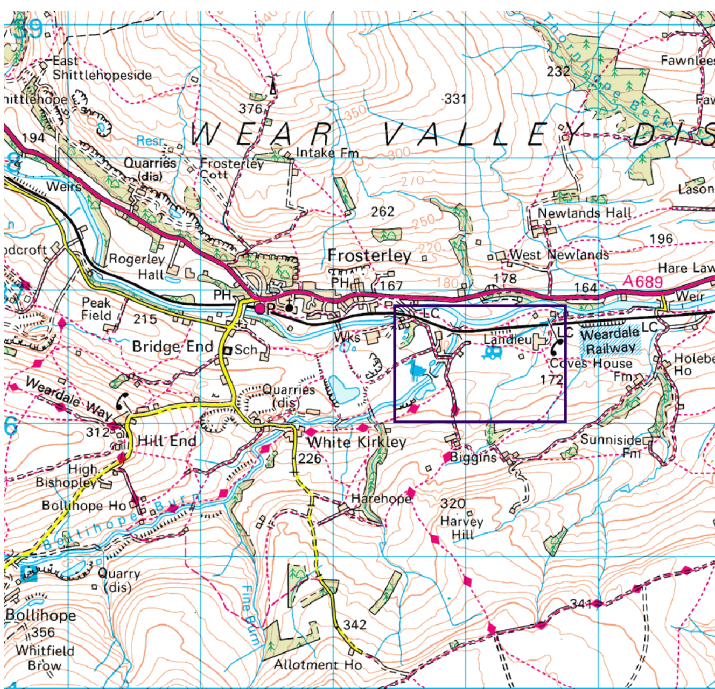
Car parking: lay-by, Frosterley, Bishop Auckland, County Durham, DL13 2SG; GR: NZ 03587 36875



Key habitats and features

-  Parking area/ start & end point
-  Survey route
-  Running water
-  Damp woodland
-  Hedgerow
-  River shingle
-  Wildflower-rich grassland
-  Wood pasture
-  Bare sandy bank
-  Pond
-  Stone feature
-  Deadwood

OS map © Crown Copyright. Durham County Council LA100049055
Contains OS data © Crown Copyright and database right 2018



OS map © Crown Copyright. Durham County Council LA100049055

Terrain: the route follows a bare track with some steep, damp slopes, stiles and uneven surfaces.

Care is need beside the river Wear as it can be fast flowing at times.

The route crosses a railway twice and follows a very quiet road. Check for trains before crossing and take care of moving vehicles.

Survey route length: 2 miles

For more information about the Harehope Quarry project, visit the website at: <http://harehopequarry.org.uk>