

Allendale road verges Special Invertebrate Site

Habitats

Flower-rich verges

Allendale road verges are a good example of North Pennines flower-rich verges. Flowers include knapweed, devil's-bit scabious, vetches, hogweed, harebell, rosebay willowherb and raspberry.



Moorland

Areas of bilberry and heather can be found in places along the verges, with larger, sheltered stands along the public by-way.



Hedgerow

A range of trees including hawthorn, cherry and rowan provide structure, food and shelter for a variety of invertebrates.

Damp woodland

A small damp woodland with dappled shade and clearings contrast with the exposed, sunny verges.

Species

Damp grassland and woodland supports green leaf-hoppers (pictured), blotch-winged hoverfly and dance fly, *Empis livida*.



Marmalade hoverflies (pictured), pale straw pearl moths, pale-saddled Leucozona hoverfly and red-legged St Mark's flies feed on nectar.



Heather colletes bees (pictured) feed on heather pollen. Red-tailed bumblebees and tree bumblebees are also found here.



Butterflies using this site include small heath, small skipper (pictured), red admiral and green-veined white.



Hedgerows are used by tree wasps, thick-thighed hoverflies and common snout hoverflies (pictured).

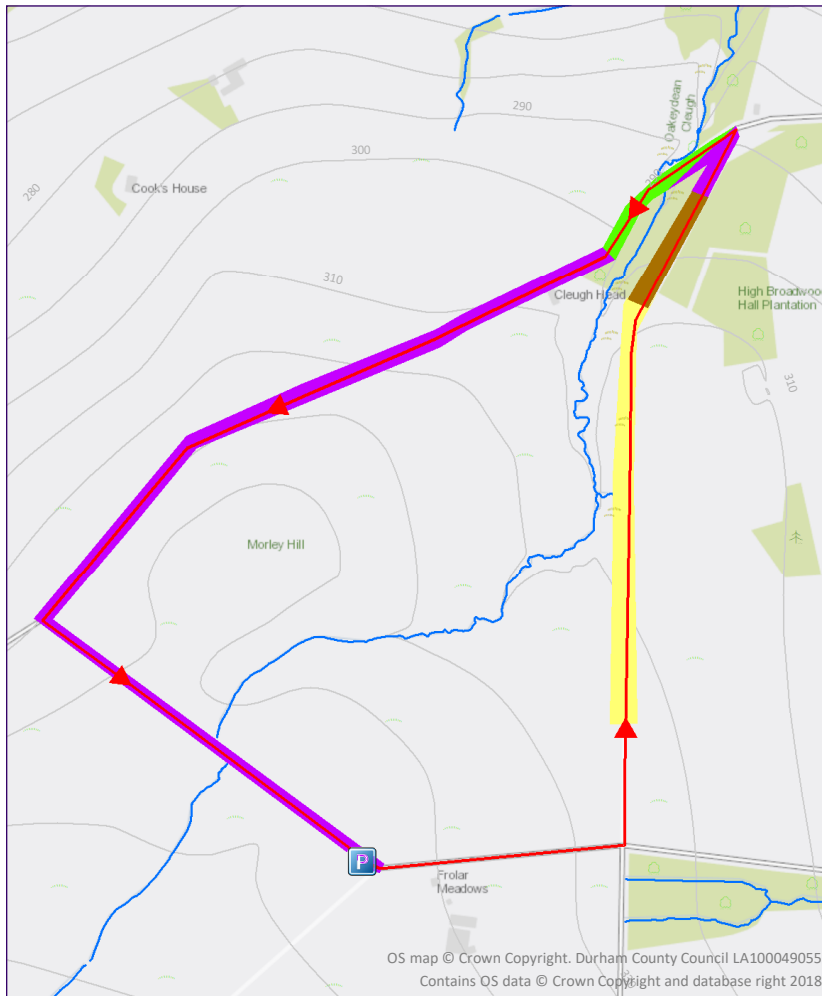


Beetles found here include 7-spot ladybirds (pictured) common red soldier beetles and black clock beetles.










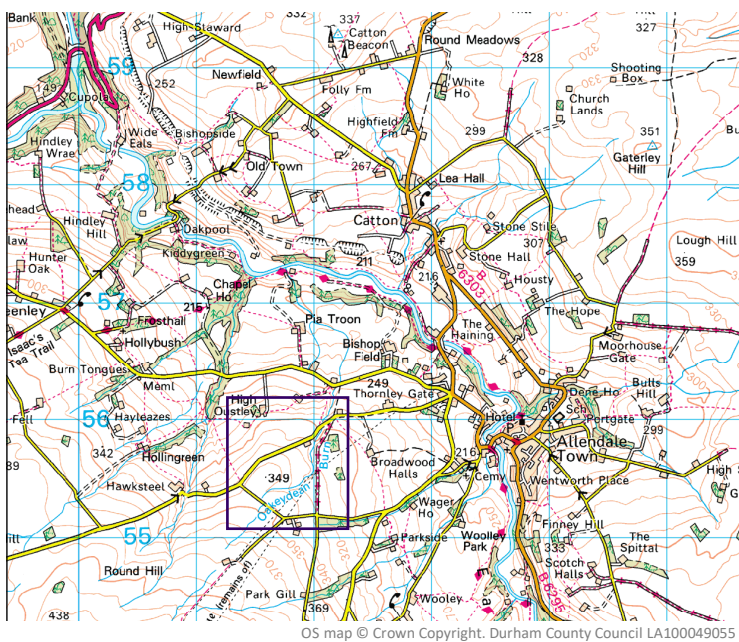
Allendale road verges invertebrate survey route

Car parking: lay-by, Thornley Gate, Allendale, Northumberland, NE47 9AE; GR: NY 81728 55172



Key habitats and features

-  Parking area/ start and end point
-  Survey route
-  Running water
-  Damp woodland
-  Flower-rich grassland
-  Hedgerow
-  Moorland with scrub



Terrain: the route follows a tarmacked road and rough track and is steep in places.

Survey route length: 1.6 miles

The survey route is on a road with sometimes fast moving traffic. Care is therefore required when recording at this site. Please take precautions to ensure you are fully visible to traffic and follow the highway code rules for pedestrians. For more information visit: www.highwaycodeuk.co.uk/rules-for-pedestrians.html