

## Garrigill road verges Special Invertebrate Site

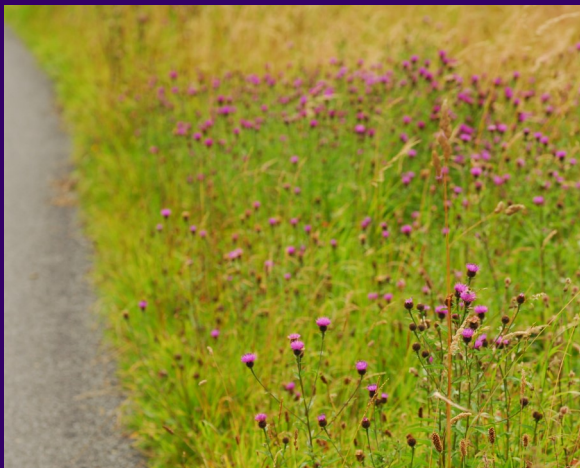
### Habitats

#### Flower-rich verges

Garrigill road verges are one of the best examples of North Pennines flower-rich verges, featuring flowering plants associated with upland hay meadows. This includes plants which are becoming scarce and represent a vital food resource for invertebrates.

Through June and July a range of flowering plants, including melancholy thistle, hogweed, raspberry and water avens, can be found.

Highlights during late summer are large stands of knapweed, devil's-bit scabious, sneezewort, meadowsweet and great burnet.



#### Hedgerow

A range of trees including hawthorn, cherry and ash provide structure, food and shelter for a variety of invertebrates.

#### Wet flushes

Drainage channels and damp areas with soft rush provide breeding habitat for a number of species.

### Species

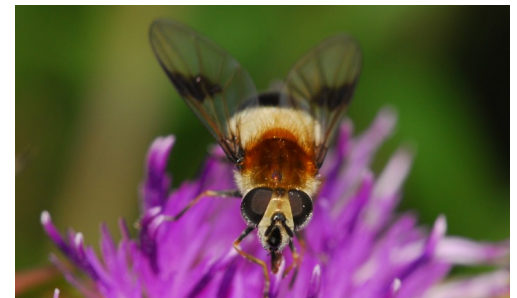
Dance flies, *Empis tessellata* and *Empis nigripes*, plus the yellow-faced blowfly (pictured), all feed on nectar and pollen here.



The verges are home to meadow cranesbill weevil, click beetle, *Aplotarsus incanus*, and common red soldier beetles (pictured).



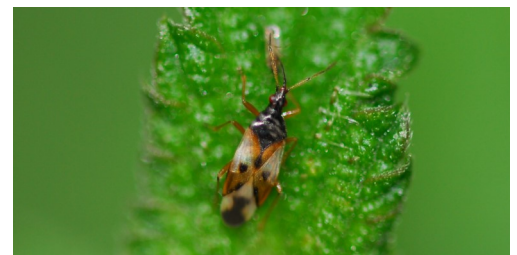
The hedgerow supports black-horned gem flies, blotch-winged hoverflies (pictured), furry droneflies and the bumblebee hoverfly.



Moths include pale straw pearl, migratory silver Y moths (pictured), and day-flying chimney sweeper.



Common flower bugs (pictured) and plant bug, *Plagiognathus arbustorum*, feed on vegetation at this site.

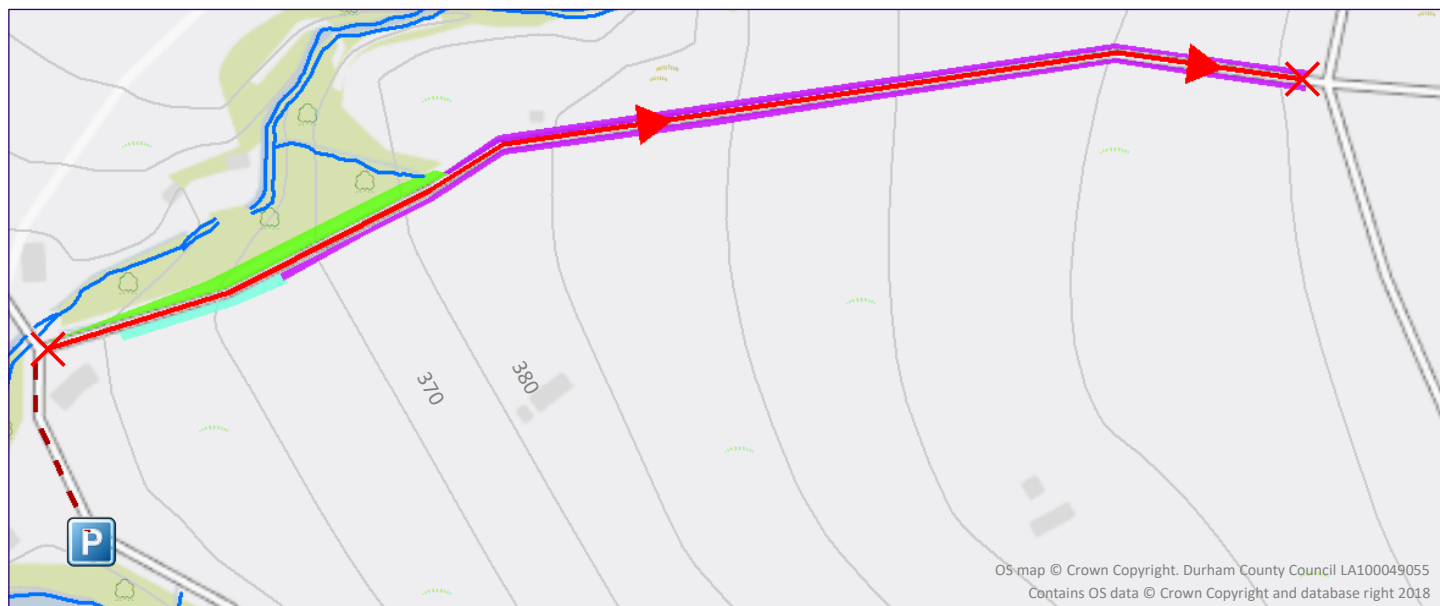


Damp areas are used by European harvestmen (pictured), five-spotted flutter flies and black snipefly larvae.











# Garrigill road verges invertibrate survey route

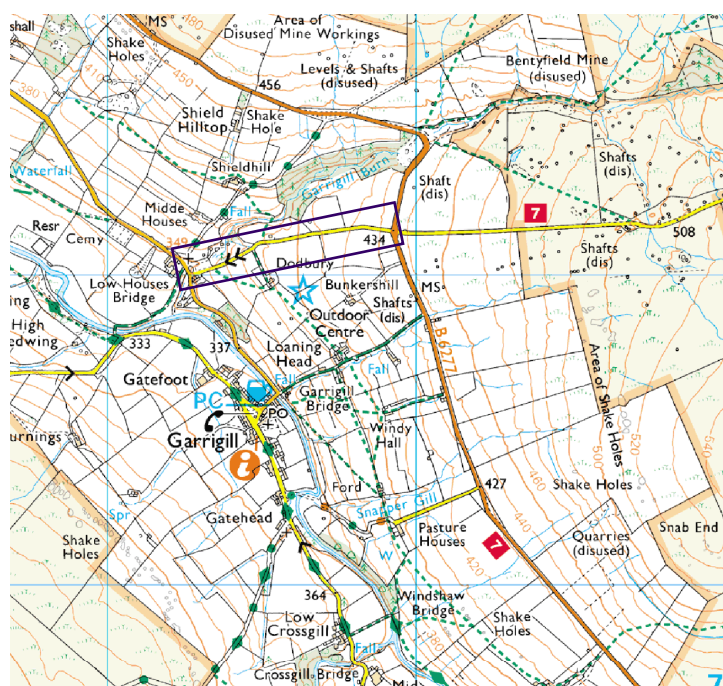
**Car parking:** lay-by, Garrigill, Cumbria, CA9 3DR; GR: NY 74276 41923



OS map © Crown Copyright. Durham County Council LA100049055  
Contains OS data © Crown Copyright and database right 2018

## Key habitats & features

-  Parking area
-  Start and end points
-  Hedgerow
-  Survey route
-  Flower-rich grassland
-  Directions to survey route
-  Running water
-  Damp bank



OS map © Crown Copyright. Durham County Council LA100049055

**Terrain:** the route follows a tarmacked road and is steep along its length.

**Survey route length:** 0.4 miles

The directions to the survey route include a small stretch of road which can sometimes experience fast moving traffic. The survey route itself is on a road with slow moving traffic but a number of tight bends. Care is therefore required when recording at this site. Please take precautions to ensure you are fully visible to traffic and follow the highway code rules for pedestrians. For more information visit: [www.highwaycodeuk.co.uk/rules-for-pedestrians.html](http://www.highwaycodeuk.co.uk/rules-for-pedestrians.html)