

Harwood-in-Teesdale Special Invertebrate Site

Habitats

Flower-rich grassland and bare areas

A sheltered, wildflower-rich grassland which includes knapweed, devil's-bit scabious, hogweed and great burnet, with damper areas of soft rush and meadowsweet. With its sheltered topography and nearby bare cliffs, this is fantastic habitat for nectar- and pollen-feeders, plant bugs and active species requiring basking areas.



River, riparian trees and river shingle

The Harwood beck flows through the site, with fast riffles, slower side pools and areas of coarse and fine river shingle. This supports a range of freshwater invertebrates and river shingle specialists. Riparian trees include willow, rowan and sycamore, providing shelter for emerging riverflies and structure and food plants for other invertebrates.



Species

Sheltered grassland is habitat for hoverfly, *Platycheirus manicatus*, and small tortoiseshell butterflies (pictured).



Flowers support declining broken-belted bumblebees (pictured) and moss carder bees, as well as cryptic and heath bumblebees.



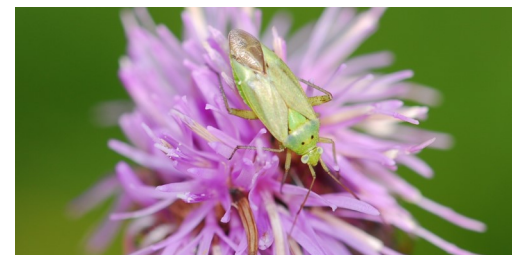
The river is home to stonefly, *Perla bipunctata* (pictured), plus small silver sedge and small yellow sedge caddisflies.



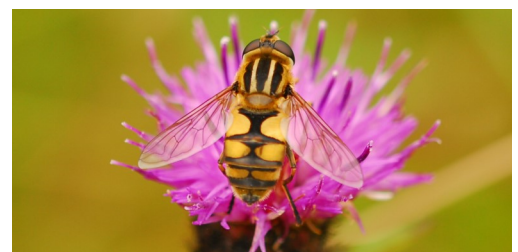
Ruddy highflyer moth larvae feed on willows while common carpet moth (pictured) larvae feed on bedstraw here.



Parasitic wasp, *Amblyteles armatorius*, potato capsid bugs (pictured) and spear thistle lacebugs feed on flowers at this site.

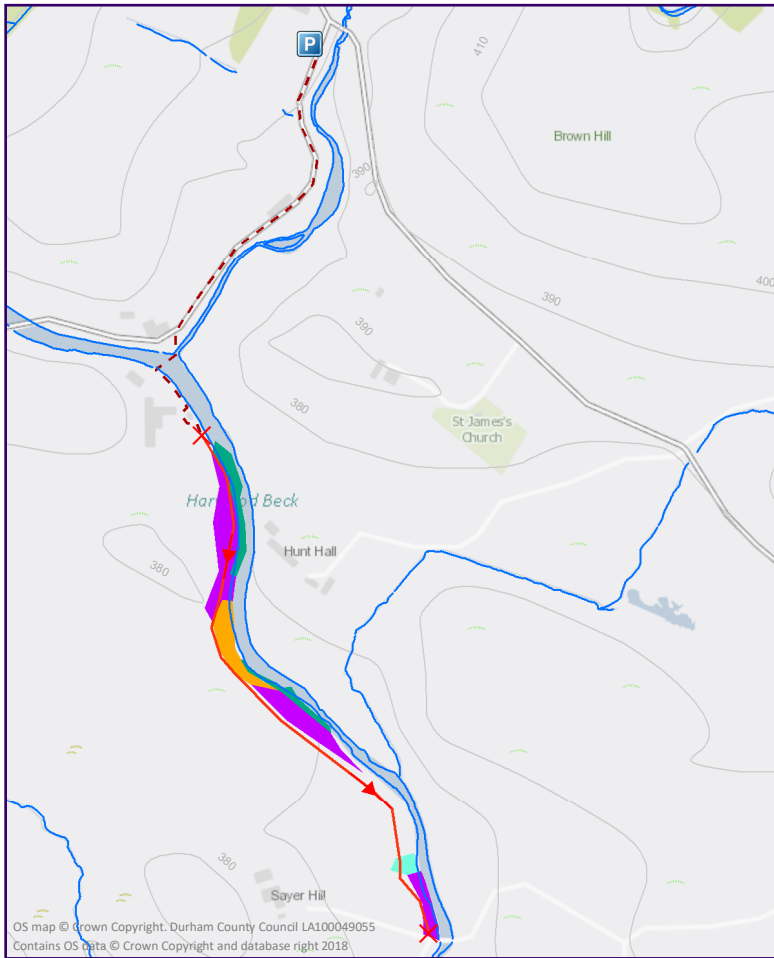


Damp areas are used by hoverflies *Platycheirus granditarsus* and the footballer hoverfly (pictured).












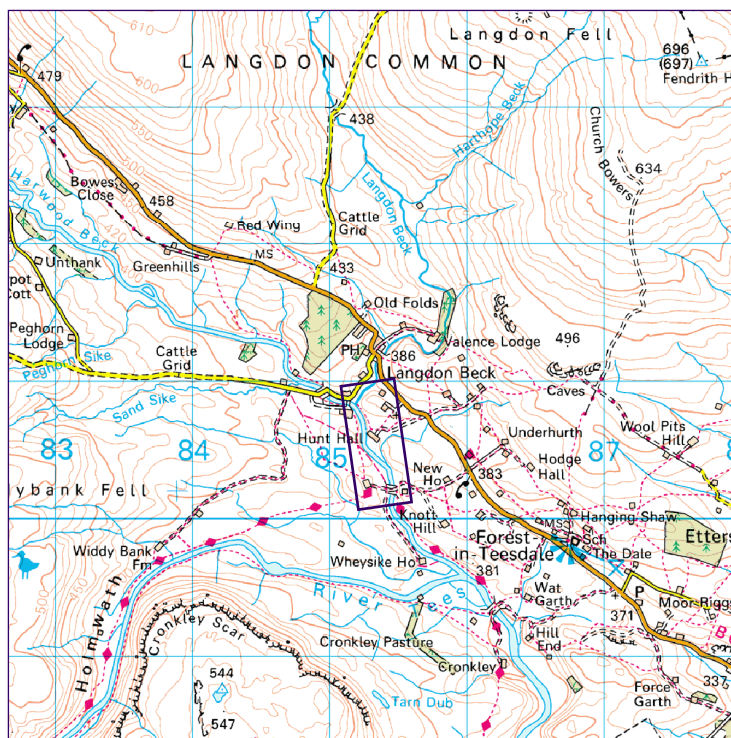
Harwood-in-Teesdale invertebrate survey route

Car parking: lay-by, near Langdon Beck Hotel, B6277, County Durham, DL12 0XP; GR: NY 85321 31186



Key habitats and features

-  Parking area
-  Directions to survey route
-  Start and end points
-  Survey route
-  Running water
-  Bare bank
-  Damp grassland
-  Flower-rich grassland
-  River shingle



Terrain: the route follows a rough footpath with steep, uneven and slippery areas. Parts of the footpath are next to a steep cliff. Livestock is sometimes in the field above the cliff.

Survey route length: 0.4 miles

The directions to the survey route follow a road with light traffic and a ford. Care is therefore required when recording at this site. Please take precautions to ensure you are fully visible to traffic and follow the highway code rules for pedestrians. For more information visit:

www.highwaycodeuk.co.uk/rules-for-pedestrians.html