

Slitt Wood Special Invertebrate Site

Habitats

Wildflower-rich grassland

Calaminarian grassland, a unique habitat developed on exposed, metal-rich soil, is found here, associated with the site's history of mining. Flowering plants include spring sandwort, mountain pansy and wild thyme, with abundant bare areas.

Woodland clearings provide areas rich with devil's-bit scabious and knapweed in late summer. Shaded banks are carpeted with wild garlic and violets in spring. Grazed grassland, with tormentil and mountain pansy plus sheep dung for dung beetles, provides a further range of habitat niches.



Wet woodland

The damp broadleaf woodland includes alder, hazel and sycamore, with areas of deadwood. This provides shelter, food plants, structure and breeding habitat.

River, river shingle, flushes and pools

The Middlehope burn flows through the site, with riffles and pools as well as areas of important river shingle habitat. Ponds with bog pondweed and surrounded by a mixture of rush and sedge, as well as wet flushes and marshy grassland, provide a wide range of aquatic habitats.

Species

Woodland understory supports ramsons hoverflies (pictured) and local bugs, *Orthops basalis* and *Calocoris alpestris*.



Alderfly, *Sialis fuliginosa* (pictured), and olive upright mayflies use the burn. Shingle is home to bugs, *Macrosaldula scotica* and *Cryptostemma alienum*.



Grassland is used by dark green fritillaries, moss carder bees, local blotch-winged droneflies and soldier beetle, *Cantharis nigricans* (pictured).



Woodland supports scorpion fly, *Panorpa germanica*, dimorphic bear hoverflies, birch sawflies and cream-spot ladybirds (pictured).



Shaded orbweaver (pictured) and invisible spiders use structural features while click beetle, *Ctenicera cuprea*, uses grassland.

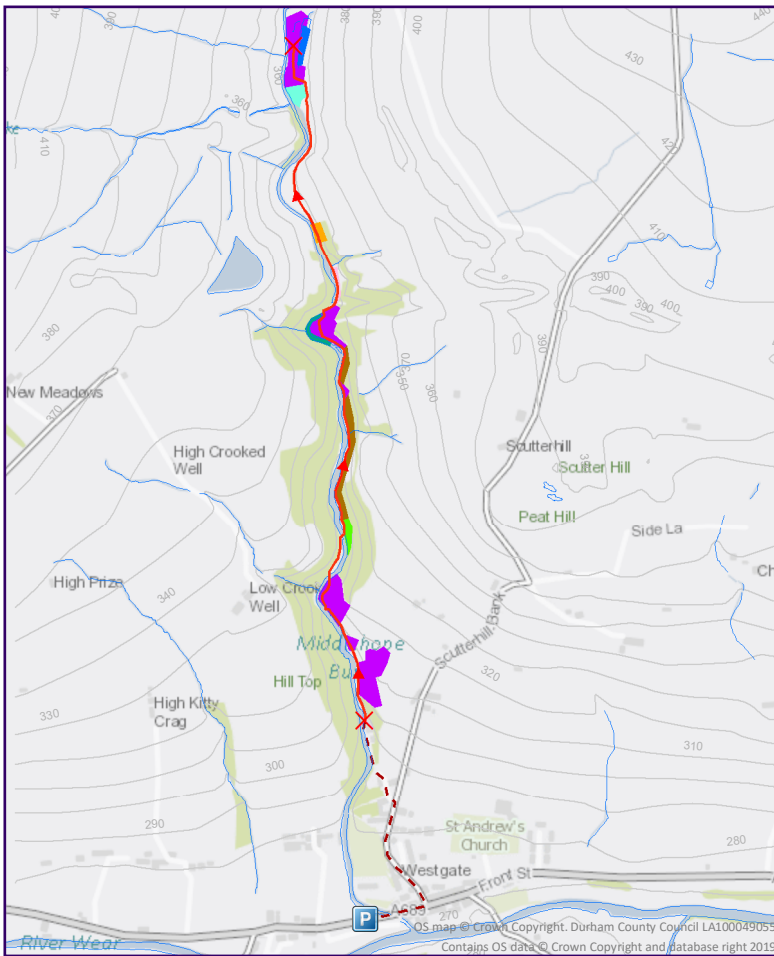


Leopard slugs (pictured), common and saddleback harvestmen and bronze shieldbugs are found in woodland.



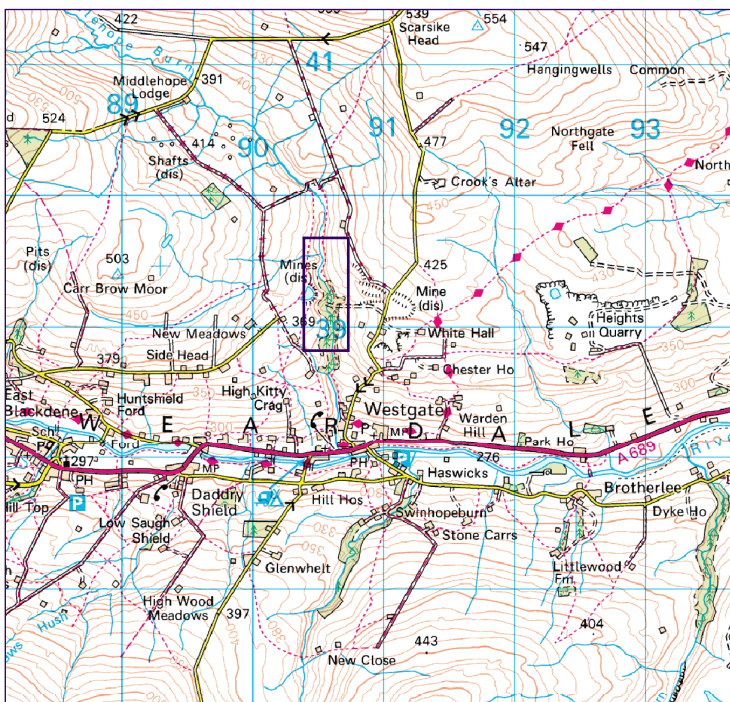
Slitt Wood invertebrate survey route

Car parking: lay-by, A689, Westgate, County Durham, DL13 1LJ; GR: NY 90645 38044



Key habitats and features

- Parking
- Directions to survey route
- Start and end point
- Survey route
- Running water
- Bare bank
- Flower-rich grassland
- Flower-rich understory
- Marshy grassland
- Pond
- River shingle
- Wet woodland



Terrain: the directions to the survey route follows a quiet road. Please be aware of traffic here. The route follows a rough track, with some steep, slippery areas, uneven ground and stiles.

Survey route length: 1 mile

The footpath used to access the survey route passes through a property within the woodland. The survey route starts immediately after this property.

Please ensure you remain on the footpath as many of the habitats found here are fragile.