



# Knitting the Serpentine: Adder hat knitting pattern

**North  
Pennines  
National  
Landscape**

Knitting the Serpentine was developed through Adders Up, a project led by the North Pennines National Landscape team and funded by The National Lottery Heritage Fund. The work celebrates the wildlife, habitats and cultural stories of the North Pennines National Landscape. The adder is one of the most distinctive species of the area, recognised by its bold zigzag markings and its quiet, elusive presence in the uplands.





# North Pennines National Landscape



## About the design

This design grew from time spent walking in the North Pennines and noticing the patterns and movements that shape the landscape. The zigzag of the adder's back and the curve of its path through the heather informed the structure of the hat. At the top of the hat, the shaping suggests the soft forms of heather, and the adder's eyes circle the crown to complete the design.

The pattern offers two ways to make the same hat. One version uses stranded colourwork knitting in multiple colours to reflect the strong contrast of the adder's markings. The second uses only two colours while keeping the full serpentine chart intact; a simpler approach that still holds the character of the original design.

## About the designer

Carole McCourt is an artist and knitter based in the North Pennines. Her practice brings together landscape, heritage and community, often through slow and tactile processes that encourage close attention to place. She has worked with local craft groups on projects such as the Smelters Shawls, which explored lead mining history through collaborative making and



storytelling. Carole's work often translates encounters with wildlife and landscape into wearable pieces that invite conversation, curiosity and care.

## Versions



Both versions invite makers to connect with a species that is iconic and vulnerable within the North Pennines National Landscape.



# Pattern notes

## Abbreviations

Abbreviation	Meaning
dec	decrease(d)
inc	increase(d)
k	knit
k2tog	knit 2 sts together as if they are one st (1 st dec)
kfb	knit into the front and back of the st (1 st inc)
p	purl
s2kp	slip 2 as if to k2tog, k1, pass slipped sts over (2 sts dec)
st(s)	stitch(es)
tbl	through the back loop
Duplicate stitch	Sewing over the V shaped stitch when complete

## Yarn

World of Wool Fluff Merino 4 Ply Yarn - 50g balls. One ball of each colour. This yarn is beautifully soft and lovely to knit with.

Multicolour version	Two-colour version
Yarn A - Scatter Cushion Yarn B - Winter Snood Yarn C - Squirrel Tail Yarn D - Velvet Mousse Yarn E - Fallen Snow Yarn F - Pappa Bear	Yarn F - Pappa Bear Yarn G - Pom Pom

## Needles

Circular or double pointed needles size 2.5mm for a small hat 53cm, size 2.75mm for a medium/large 56cm hat. (You can go up a needle size for a larger size).

## Other

Darning needle to weave in the ends.

Stitch markers

## Gauge

It's important to check your tension carefully after knitting a swatch and blocking it. Gauge is measured after blocking.

- Small - 34 stitches to 42 rounds = 10cm square. 18cm from brim to the top of the crown. 53cm circumference.
- Medium/Large - 32 stitches to 38 rounds = 10cm square. 20 cm from brim to the top of the crown. 56cm circumference.

## Techniques

Knitting in the round, increasing, decreasing, stranded colour work, weaving in ends.

## Pattern notes

The hat is worked in the round from the brim to the crown. There are some long floats that need to be caught as you go along, usually every 5 stitches. The eyes on the snake are created with duplicate stitches when the hat is complete. All charts are worked from right to left. Use your preferred method of working in the round with circular needles, double pointed needles, magic loop or a combination.

## Chart notes

All charts are worked from right to left. For the two-colour versions, use yarn F and G following the charts for colour changes. For the main body, Charts C & D are worked at the same time. Work Chart C twice, Chart D once, then Chart C three times for every round. This will avoid a jog at the front of the hat.



# Pattern instructions

## Brim

Using yarn A, cast on 152 sts and join to knit in the round, taking care not to twist your work.

**Chart A:** This is a corrugated 2 X 2 rib.

Round 1: knit every stitch using the colours as per the chart.

Round 2-9: work in K2 P2 ribbing changing colours as indicated on the chart.

Continue in yarn A.

Round 10: Knit to end.

Round 11: Inc round: K4, [kfb, k8] to last 4 sts, k4. 168 sts.

## Body

**Chart B:** This is 4st repeat (42 times).

Work both rounds of Chart B changing colour as indicated on the chart.

Continue in yarn B.

Next round: Knit to the end.

**Chart C & D:** These two charts are 28 stitch repeats with 30 rounds.

For this section, **Charts C & D** are worked at **the same time**, changing colour as indicated on the chart.

Round 1:

Knit round 1 of Chart C **twice**,

Knit round 1 of Chart D **once**,

Knit round 1 of Chart C **three times**.

Round 2:

Knit round 2 of Chart C **twice**,

Knit round 2 of Chart D **once**,

Knit round 2 of Chart C **three times**.

## Round 3-30:

Continue to knit each round by knitting Chart C twice, Chart D once and C three times.

## Crown

**Chart E:** This is 4st repeat (42 times).

Work both rounds of Chart E changing colour as indicated on the chart.

Continue in yarn A.

Next round: Knit to end.

Dec round: [K10, k2tog] to end. 154 sts remaining.

**Chart F:** This is 22 st repeat, worked 7 times across the round.

Start working from Chart F, changing colours and decreasing 2 stitches using **s2kp** as indicated on the chart, until all 26 rounds of the chart are complete. 14 sts remaining.

**Dec round:** Slip the first stitch of the round to the right needle without knitting it so that the round begins on the centre stitch of Chart F. Break yarn A. Using yarn B, [k2tog tbl] to end of round. 7 sts remaining.

## Finishing

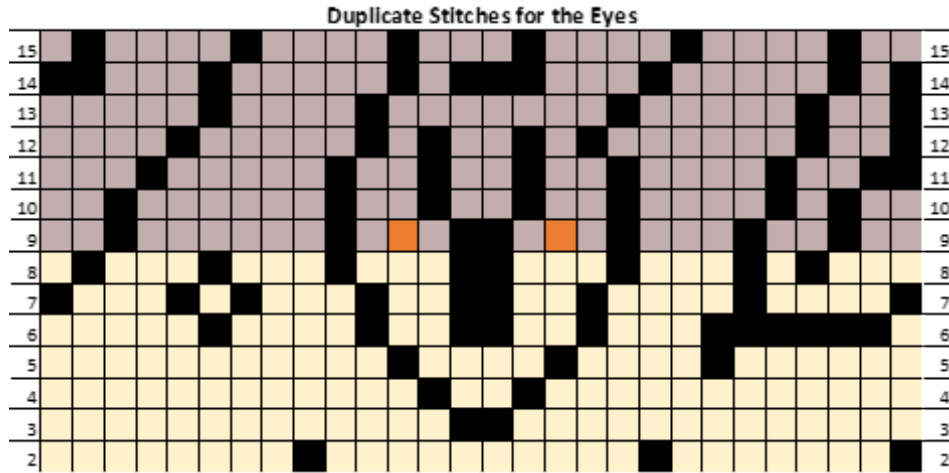
Break yarn, leaving a 15cm tail, and thread tail through remaining 7 stitches to close the crown. Tie securely and weave in all ends.

Block the hat by hand washing, stretch the hat over a pudding bowl or a balloon and leave it to dry.



# Adder eyes

Using yarn C, embroider the two eyes for the adder with duplicate stitches as indicated below.



## Key for charts

### Key

	Knit
●	Purl
↑	s2kp
	Yarn A
	Yarn B
	Yarn C
	Yarn D
	Yarn E
	Yarn F
	Yarn G

# Charts - multicoloured version

Chart A

	4	3	2	1	
11	■	■	■	■	11
10	■	■	●	●	10
9	■	■	●	●	9
8	■	■	●	●	8
7	■	■	●	●	7
6	■	■	●	●	6
5	■	■	●	●	5
4	■	■	●	●	4
3	■	■	●	●	3
2	■	■	●	●	2
1	■	■	■	■	1
	4	3	2	1	

Chart B

2	■	■	■	■
1	■	■	■	■
	4	3	2	1

Chart E

2	■	■	■	■
1	■	■	■	■
	4	3	2	1

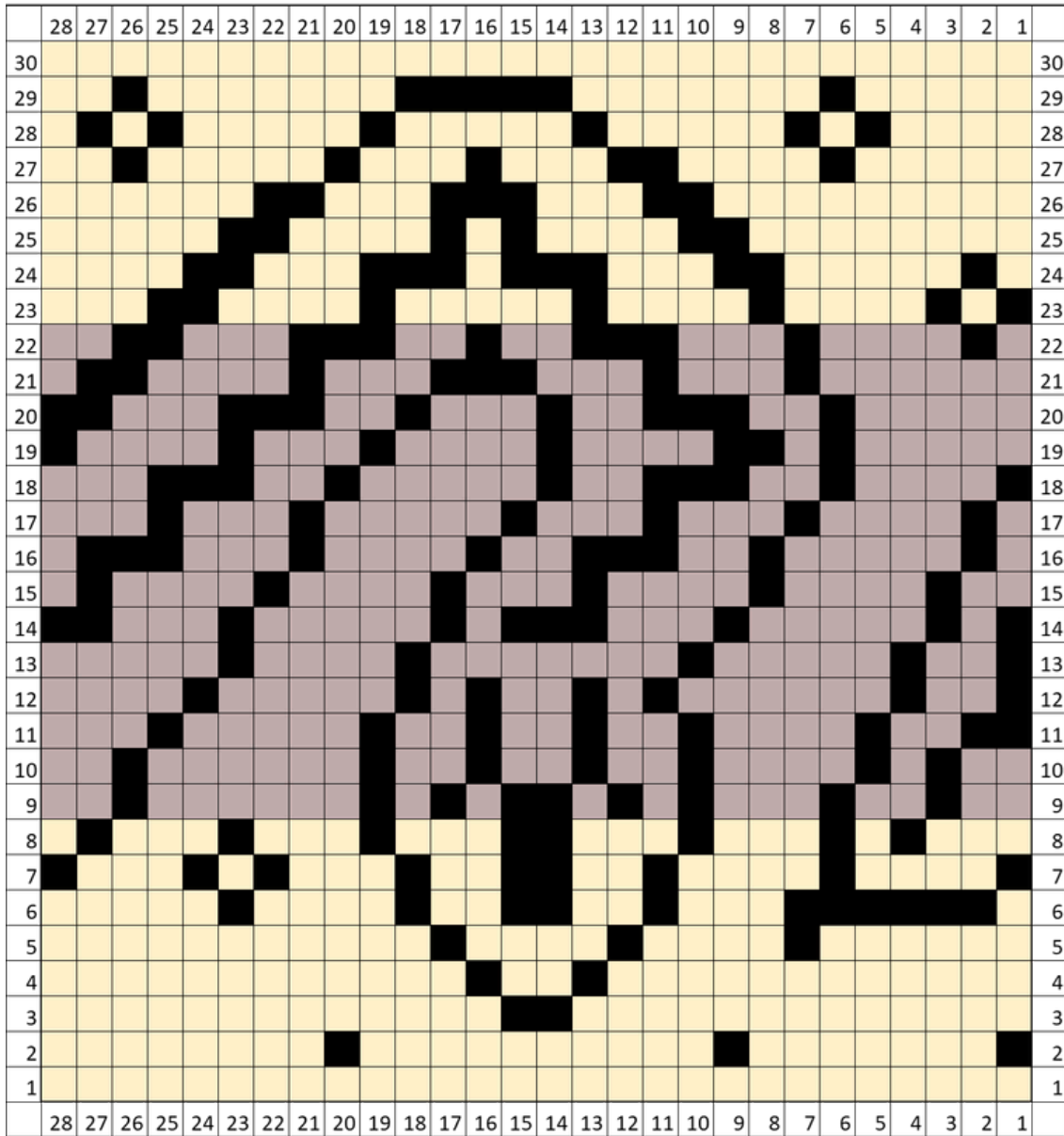
Chart C

	28	27	26	25	24	23	22	21	20	19	18	17	16	15	14	13	12	11	10	9	8	7	6	5	4	3	2	1	
30	■	■	■	■	■	■	■	■	■	■	■	■	■	■	■	■	■	■	■	■	■	■	■	■	■	■	■	■	30
29	■	■	■	■	■	■	■	■	■	■	■	■	■	■	■	■	■	■	■	■	■	■	■	■	■	■	■	■	29
28	■	■	■	■	■	■	■	■	■	■	■	■	■	■	■	■	■	■	■	■	■	■	■	■	■	■	■	■	28
27	■	■	■	■	■	■	■	■	■	■	■	■	■	■	■	■	■	■	■	■	■	■	■	■	■	■	■	■	27
26	■	■	■	■	■	■	■	■	■	■	■	■	■	■	■	■	■	■	■	■	■	■	■	■	■	■	■	■	26
25	■	■	■	■	■	■	■	■	■	■	■	■	■	■	■	■	■	■	■	■	■	■	■	■	■	■	■	■	25
24	■	■	■	■	■	■	■	■	■	■	■	■	■	■	■	■	■	■	■	■	■	■	■	■	■	■	■	■	24
23	■	■	■	■	■	■	■	■	■	■	■	■	■	■	■	■	■	■	■	■	■	■	■	■	■	■	■	■	23
22	■	■	■	■	■	■	■	■	■	■	■	■	■	■	■	■	■	■	■	■	■	■	■	■	■	■	■	■	22
21	■	■	■	■	■	■	■	■	■	■	■	■	■	■	■	■	■	■	■	■	■	■	■	■	■	■	■	■	21
20	■	■	■	■	■	■	■	■	■	■	■	■	■	■	■	■	■	■	■	■	■	■	■	■	■	■	■	■	20
19	■	■	■	■	■	■	■	■	■	■	■	■	■	■	■	■	■	■	■	■	■	■	■	■	■	■	■	■	19
18	■	■	■	■	■	■	■	■	■	■	■	■	■	■	■	■	■	■	■	■	■	■	■	■	■	■	■	■	18
17	■	■	■	■	■	■	■	■	■	■	■	■	■	■	■	■	■	■	■	■	■	■	■	■	■	■	■	■	17
16	■	■	■	■	■	■	■	■	■	■	■	■	■	■	■	■	■	■	■	■	■	■	■	■	■	■	■	■	16
15	■	■	■	■	■	■	■	■	■	■	■	■	■	■	■	■	■	■	■	■	■	■	■	■	■	■	■	■	15
14	■	■	■	■	■	■	■	■	■	■	■	■	■	■	■	■	■	■	■	■	■	■	■	■	■	■	■	■	14
13	■	■	■	■	■	■	■	■	■	■	■	■	■	■	■	■	■	■	■	■	■	■	■	■	■	■	■	■	13
12	■	■	■	■	■	■	■	■	■	■	■	■	■	■	■	■	■	■	■	■	■	■	■	■	■	■	■	■	12
11	■	■	■	■	■	■	■	■	■	■	■	■	■	■	■	■	■	■	■	■	■	■	■	■	■	■	■	■	11
10	■	■	■	■	■	■	■	■	■	■	■	■	■	■	■	■	■	■	■	■	■	■	■	■	■	■	■	■	10
9	■	■	■	■	■	■	■	■	■	■	■	■	■	■	■	■	■	■	■	■	■	■	■	■	■	■	■	■	9
8	■	■	■	■	■	■	■	■	■	■	■	■	■	■	■	■	■	■	■	■	■	■	■	■	■	■	■	■	8
7	■	■	■	■	■	■	■	■	■	■	■	■	■	■	■	■	■	■	■	■	■	■	■	■	■	■	■	■	7
6	■	■	■	■	■	■	■	■	■	■	■	■	■	■	■	■	■	■	■	■	■	■	■	■	■	■	■	■	6
5	■	■	■	■	■	■	■	■	■	■	■	■	■	■	■	■	■	■	■	■	■	■	■	■	■	■	■	■	5
4	■	■	■	■	■	■	■	■	■	■	■	■	■	■	■	■	■	■	■	■	■	■	■	■	■	■	■	■	4
3	■	■	■	■	■	■	■	■	■	■	■	■	■	■	■	■	■	■	■	■	■	■	■	■	■	■	■	■	3
2	■	■	■	■	■	■	■	■	■	■	■	■	■	■	■	■	■	■	■	■	■	■	■	■	■	■	■	■	2
1	■	■	■	■	■	■	■	■	■	■	■	■	■	■	■	■	■	■	■	■	■	■	■	■	■	■	■	■	1
	28	27	26	25	24	23	22	21	20	19	18	17	16	15	14	13	12	11	10	9	8	7	6	5	4	3	2	1	



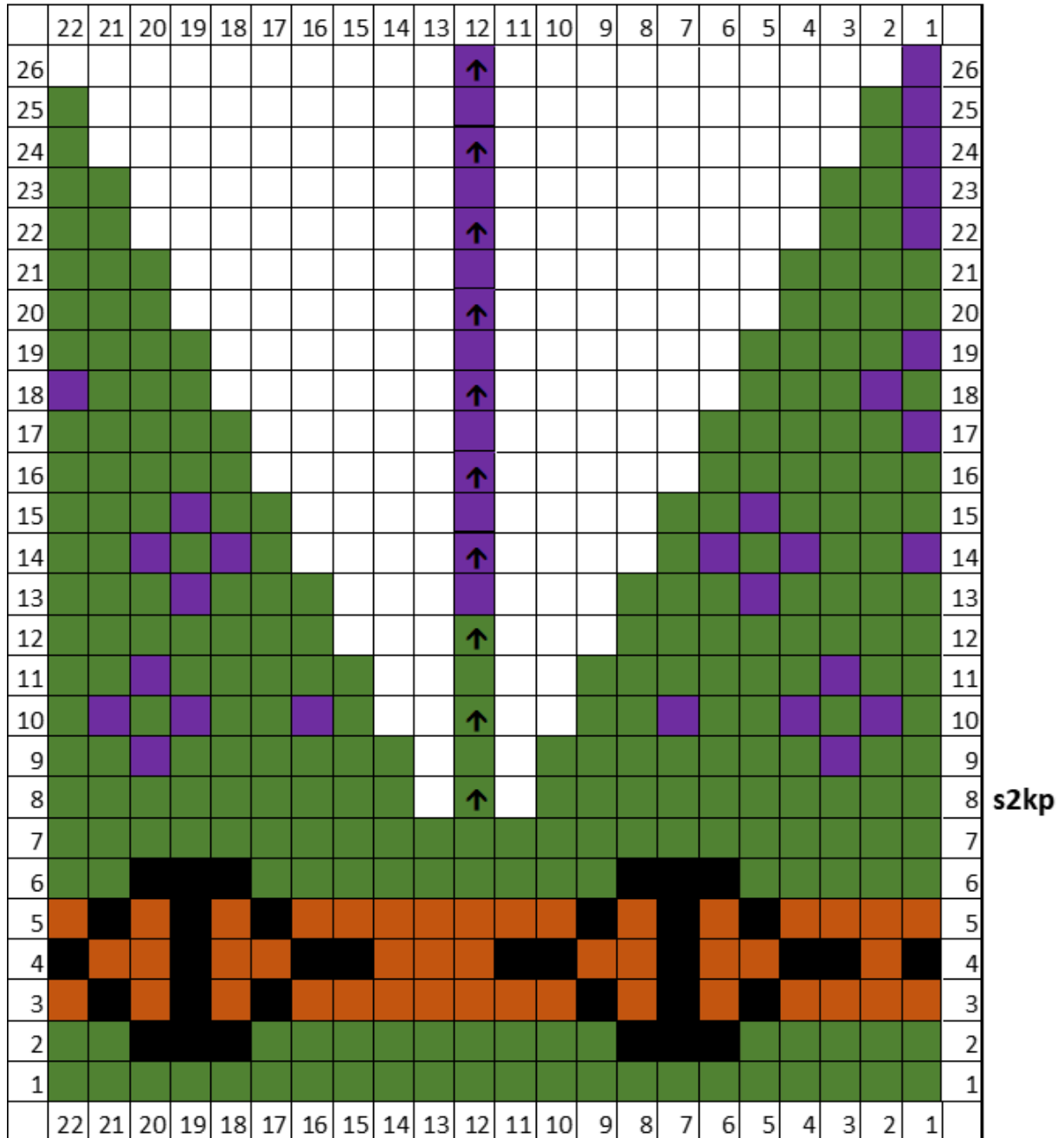
# Charts - multicoloured version

Chart D



# Charts - multicoloured version

Chart F



# Charts - two colour version

Chart A

	4	3	2	1	
11					11
10			●	●	10
9			●	●	9
8			●	●	8
7			●	●	7
6			●	●	6
5			●	●	5
4			●	●	4
3			●	●	3
2			●	●	2
1					1
	4	3	2	1	

Chart B

2				
1				
	4	3	2	1

Chart E

2				
1				
	4	3	2	1

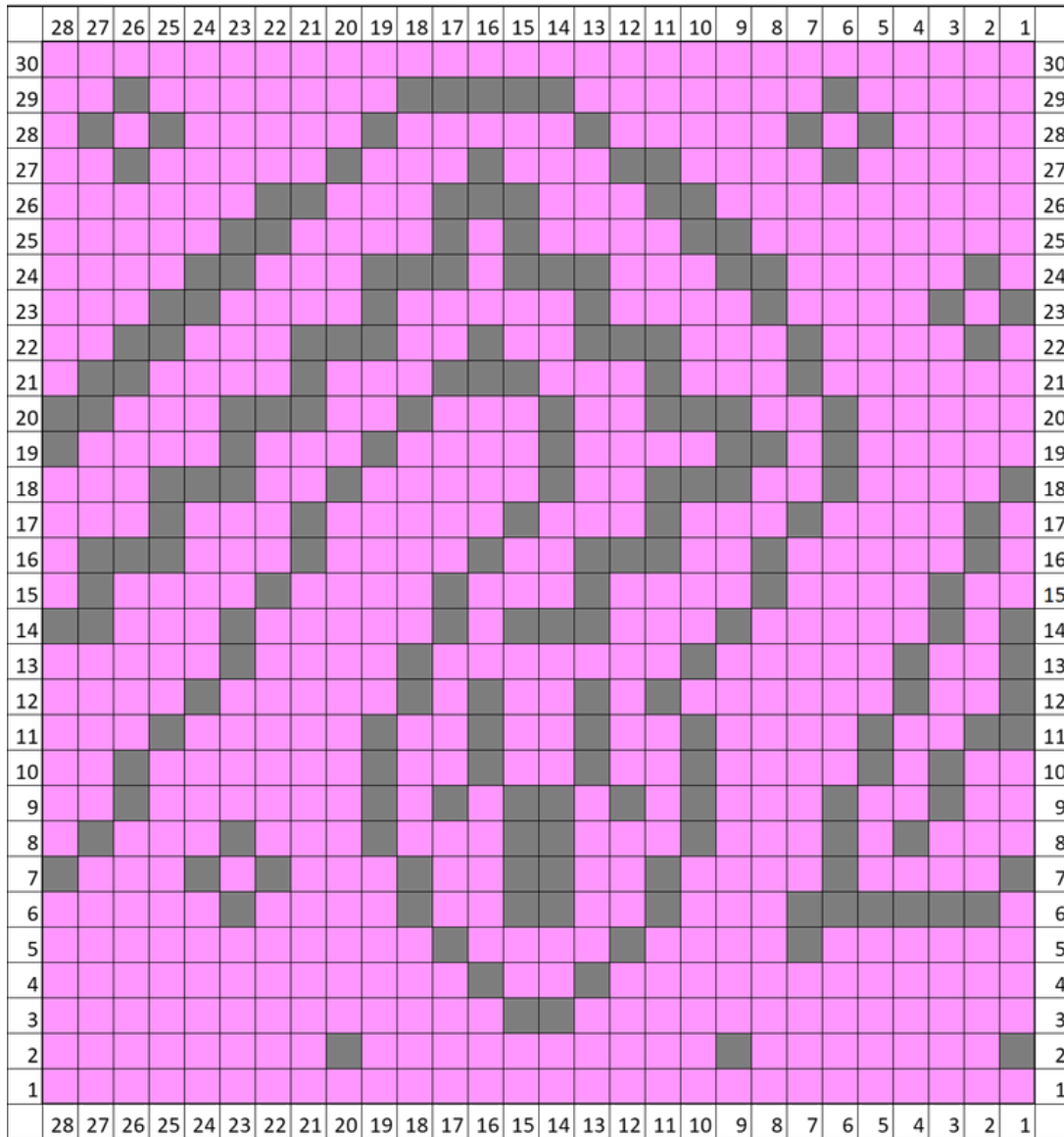
Chart C

	28	27	26	25	24	23	22	21	20	19	18	17	16	15	14	13	12	11	10	9	8	7	6	5	4	3	2	1		
30																														
29																														29
28																														28
27																														27
26																														26
25																														25
24																														24
23																														23
22																														22
21																														21
20																														20
19																														19
18																														18
17																														17
16																														16
15																														15
14																														14
13																														13
12																														12
11																														11
10																														10
9																														9
8																														8
7																														7
6																														6
5																														5
4																														4
3																														3
2																														2
1																														1
	28	27	26	25	24	23	22	21	20	19	18	17	16	15	14	13	12	11	10	9	8	7	6	5	4	3	2	1		



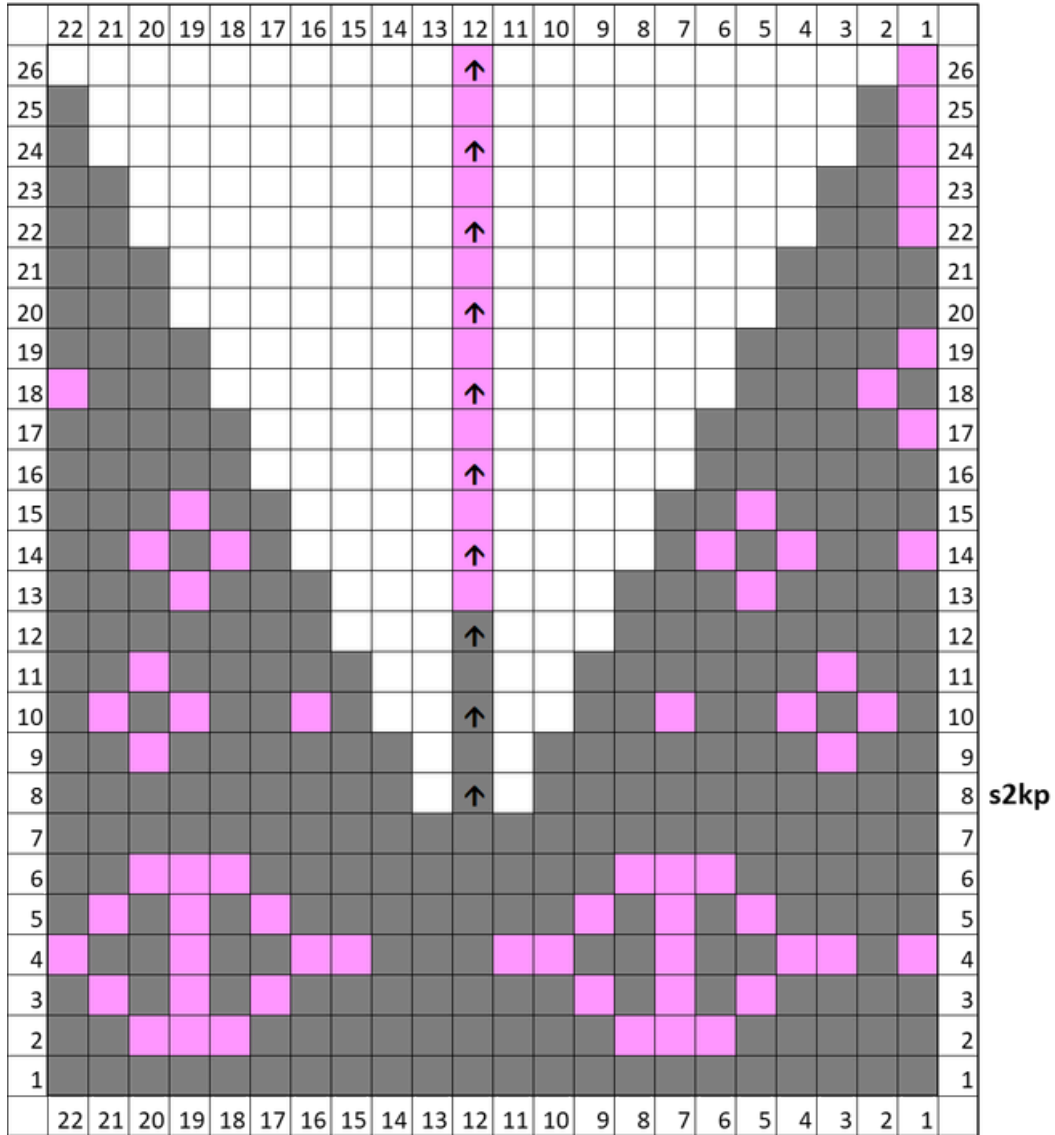
# Charts - two colour version

Chart D



# Charts - two colour version

Chart F



# Thanks and acknowledgements

Adders Up is delivered by the North Pennines National Landscape team. The primary aims of the project are to:

- address the misconceptions and myths about adders by engaging with schools, the arts sector, and communities within the North Pennines National Landscape
- locate adder 'hotspots' by engaging audiences new to wildlife recording
- survey for adders and their habitats by training volunteers and mapping the distribution of adder populations more accurately to better protect habitat
- encourage sensitive land management and enhance the connectivity of adder populations whilst championing the local knowledge and experience of landowners and managers across the National Landscape
- share our work and best practices with organisations and communities within the North Pennines and beyond



[https://northpennines.org.uk/what\\_we\\_do/nature-and-wildlife/adders-up/](https://northpennines.org.uk/what_we_do/nature-and-wildlife/adders-up/)



Using money raised by National Lottery players, The National Lottery Heritage Fund supports projects that connect people and communities with the UK's heritage. Adders Up is made possible with The National Lottery Heritage Fund.



Adders Up is funded by Northumbrian Water through their Branch Out scheme: <https://www.nwg.co.uk/responsibility/environment/branch-out-funds/branch-out/>

